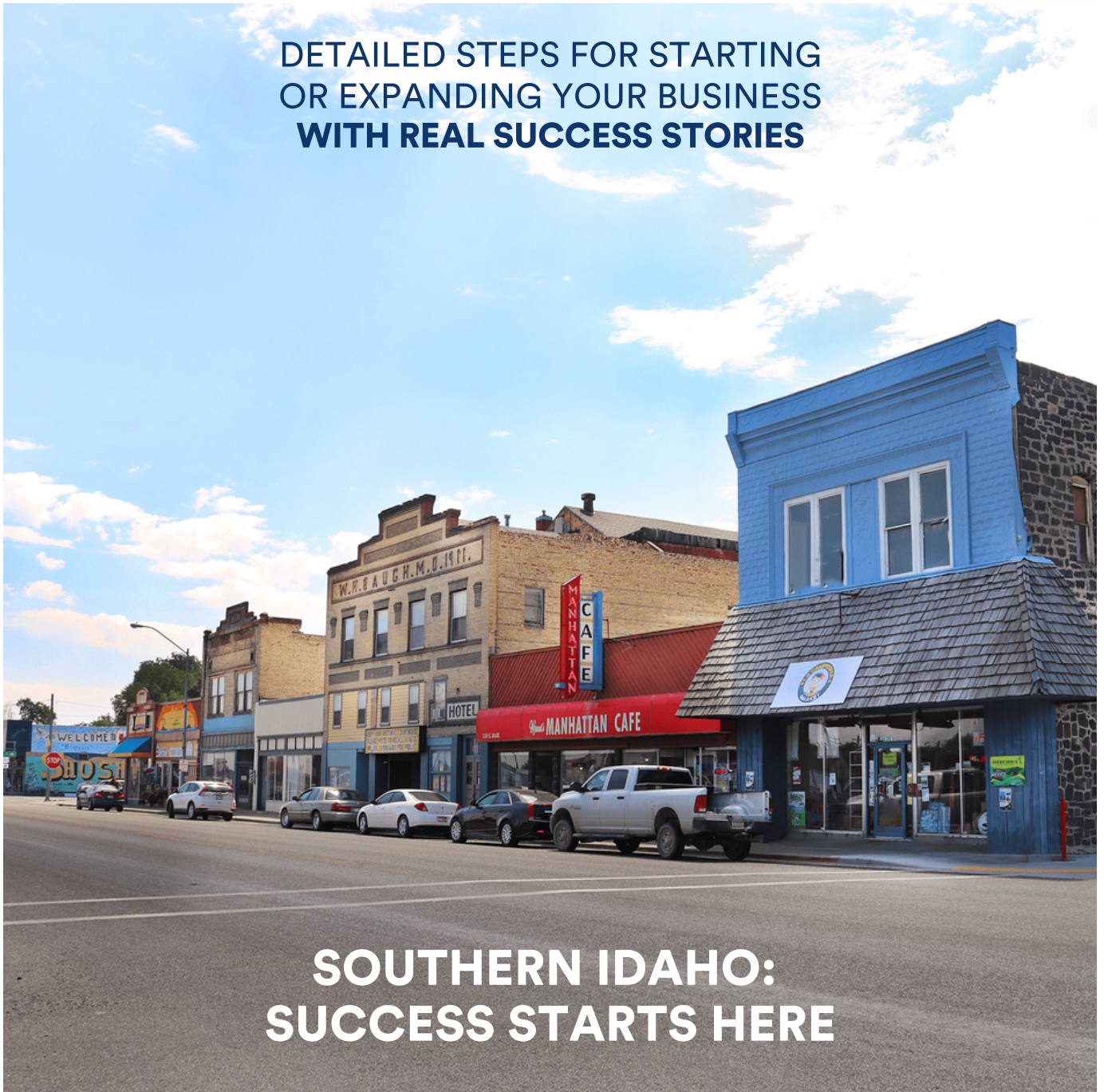


HOW TO DO BUSINESS IN

SHOSHONE IDAHO

DETAILED STEPS FOR STARTING
OR EXPANDING YOUR BUSINESS
WITH REAL SUCCESS STORIES



**SOUTHERN IDAHO:
SUCCESS STARTS HERE**

SOUTHERNIDAHO.ORG



YOUR GUIDE TO DOING BUSINESS IN SHOSHONE

- 03** **WHY SHOSHONE**

- 04** **PERMITS, LICENSING
AND ORDINANCES**

- 06** **FINANCING AND
INCENTIVES**

- 07** **COMMUNITY PARTNERS
AND RESOURCES**

- 08** **EXPANDING YOUR
BUSINESS**

- 09** **A SHOSHONE SUCCESS
STORY**



WHY SHOSHONE?

With a rich history as one of the first cities in the Magic Valley, Shoshone was founded in 1882 as a railroad town. Union Pacific Railroad's main line runs through the middle of town on the Pocatello-to-Nampa line.

Shoshone is often dubbed “Mayberry” (after the fictional television show) due to its down-home and neighbors-helping-neighbors atmosphere. Shoshone is a tourist dream: historic buildings, beautiful city park, seasonal events like Shoshone Arts in the Park, Farmers Markets, County Fair and Rodeo, and the Lost N Lava Cowboy Gathering, and it is even home to the oldest café in Idaho. In addition to it being a main destination on the way to Sun Valley, Idaho, visitors can enjoy the Shoshone Ice Caves, Mammoth Cave and Museum, Black Magic Canyon, and more outdoor activities.

Shoshone has a lot to offer and is always welcoming new and expanding businesses to town.

WHERE DO YOU START?

Starting a business can be frustrating and can often leave you wondering where to even begin. In the following pages, we'll outline everything you need to know to get started. And, of course, if you have questions along the way, our team is here to connect you to the answers you need.



PERMITS, LICENSES, ORDINANCES AND MORE

PERMITS

Receiving permits to start your business is a key step in the process. You'll need to reach out to the local city office to find out what local, state, or federal guidelines you will need to follow, what forms to fill out, and where and how your business can set up shop.

When it's time to get permits ready, contact the city of Shoshone: [208-886-2030](tel:208-886-2030)

ORDINANCES

Understanding local ordinances is highly recommended, since they regulate a large portion of business activity (i.e. noise, snow removal, pet restrictions, and building and zoning regulations, etc.).

Call the city to understand its ordinances and how they affect your business: [208-886-2030](tel:208-886-2030)

PLANNING & ZONING

Knowing where your business can operate and what rules that property must follow is another essential part of getting your business off the ground. You will often need to meet with the city's P&Z committee to receive approval for using a specific property or area.

For a P&Z map or to coordinate a meeting, call Shoshone P&Z: [208-886-2030](tel:208-886-2030)

FORMS, FORMS & MORE FORMS

There are many forms to fill out, but luckily, the Idaho Secretary of State's website makes it easy. At the link below, you'll find forms to incorporate a business, register your business name or trademark, notary information, and more specifically in the state of Idaho:

sos.idaho.gov/business-services-resources



PRO TIP:

**"HAVE A PRESENCE
ON SOCIAL MEDIA!
THAT HAS BEEN OUR
BIGGEST TOOL IN
GETTING OUR NAME
OUT THERE AND
GETTING OUR
PRODUCTS
NOTICED."**

KEVIN WYANT, owner
MANHATTAN CAFE in Shoshone, Idaho

SOUTHERN IDAHO: SUCCESS STARTS HERE



FINANCING AND INCENTIVES

Idaho and the Magic Valley are business friendly. The state of Idaho and Lincoln County offer many incentives to help get your business started on the right foot and give you financial stability. Some of these incentives include:

Idaho Tax Reimbursement Incentive

The Tax Reimbursement Incentive (TRI) is a performance-based incentive featuring a tax credit of up to 30% for up to 15 years on new state tax revenues generated by companies seeking to expand in or relocate to Idaho by adding new, qualifying jobs.

Property Tax Exemption

In Lincoln County, businesses investing at least \$500,000 in new or existing non-retail, commercial or industrial facilities, may qualify for a full or partial property tax exemption for up to five years.

Workforce Development Reimbursements

Receive up to \$3,000 in cash reimbursements for the training of new full-time employees or for helping retain employees facing permanent layoff through workforce development training reimbursements.

Visit the link below for more information on qualifying incentives:

commerce.idaho.gov/incentives-and-financing/incentives

Questions or need assistance?

Contact the Southern Idaho Economic Development REDS team:

[208-732-6459](tel:208-732-6459) or southernidaho.org/contact



COMMUNITY PARTNERS

Southern Idaho Economic Development

Southern Idaho Economic Development is the Magic Valley's single-point contact for business relocation, expansion and talent growth. Our Rural Economic Development Services (REDS) program serves Shoshone and other surrounding rural communities. REDS can help connect you to appropriate state agencies, grants and funding, as well as free marketing trainings on social media, website development, and more. southernidaho.org

Region IV Development Association

RIVDA can help small businesses from startups to expansions and can partner with banks or work individually to provide financing for real estate, equipment, inventory, tenant improvements, and working capital. rivda.org

Small Business Administration

The SBA connects entrepreneurs with lenders and funding to help them plan, start, and grow their business. sba.gov

Small Business Development Center

SBDC provides guidance on business planning, market research, cost analysis and more. The one-on-one business consulting can be invaluable to any potential business owner. idahosbdc.org

Idaho Department of Commerce

Idaho Commerce leverages federal and state resources to help with financing for facility expansions, identifying Idaho tax incentives, finding workforce development and grant opportunities, and more. commerce.idaho.gov

Shoshone Chamber of Commerce

The Shoshone Chamber of Commerce is the business voice of the community. It provides members with a strong vision and focused leadership to enhance the economic vitality and quality of life in Shoshone. shoshonechamber.com

College of Southern Idaho Workforce Development & Training

CSI Workforce Development & Training offers exceptional business and technical training for regional and national/international companies located in the Magic Valley. workforce.csi.edu

Idaho Department of Labor

IDOL can help find qualified candidates in your talent search. labor.idaho.gov

Business Plus

Business Plus is a partnership of influential business leaders joining forces to create regional economic stability and business growth opportunities. businessplusinc.org



EXPAND YOUR BUSINESS IN SHOSHONE

When it's time to expand your business, you can take similar steps and utilize the same community partners and incentives outlined in the previous sections. If it's time to expand your reach outside the United States, here are a few resources to begin international trading and exports.

State Trade Expansion Program

STEP is funded in part through a grant with the U.S. Small Business Administration (SBA) and is administered by Idaho Commerce. The goals of STEP are to increase the number of small businesses that export, increase the value of exports and increase the number of small businesses exploring significant new trade opportunities. bit.ly/IDstepgrant

Top Export Locations

Idaho exports grew from \$2 billion in 2003 to \$4.2 billion in 2018. Idaho companies are selling goods and services to 162 countries, including Taiwan, Canada, China, Mexico, and more. bit.ly/IDexports

Trade Missions

Trade missions are an opportunity to pursue potential business partnerships, make contacts, and open doors in foreign markets. They are extremely targeted events that often result in increased sales or company representation in new foreign markets. bit.ly/IDtrademission

Trade officers in East Asia, China, Mexico

Idaho's international trade office managers are here to guide you through all the steps of expanding into foreign markets. bit.ly/IDtradeofficers



SUCCESS STORY: MANHATTAN CAFE

The oldest cafe in Idaho

The Manhattan Cafe started doing business in 1890 as the Opera House Café—it is still a mystery as to when the name was changed to the Manhattan Café.

A fire broke out in 1961 and destroyed a lot of the original interior. When it reopened, it expanded into the Idaho staple it is today. The current owner is Kevin Wyant, and his parents, George and Betty, took ownership in 1980 and have been operating it ever since. Sadly, the café lost Betty in January 2018, but the historic restaurant has bounced back and, in her memory, are doing better than ever.

Whether you're spending an afternoon in Shoshone or passing through town, stop in to experience the oldest café in Idaho.

More information:

133 S Rail St W, Shoshone, ID 83352

facebook.com/shoshonemanhattancafe



**SOUTHERN
IDAHO** ECONOMIC
DEVELOPMENT

For more information and/or to contact
Southern Idaho Economic Development, visit:

SOUTHERNIDAHO.ORG